



SUSTAINABLE by DESIGN

Mondi Group AGM
3 May 2024



2023 Full Year Results

Resilient performance with strong cash generation

Growth investments on track

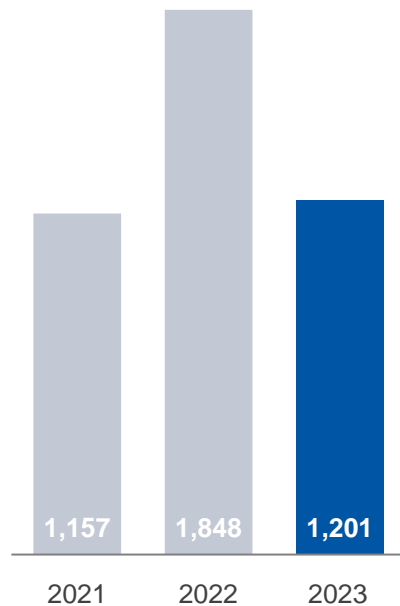
Continued progress delivering our sustainability commitments



Resilient performance with strong cash generation

Underlying EBITDA

€ million



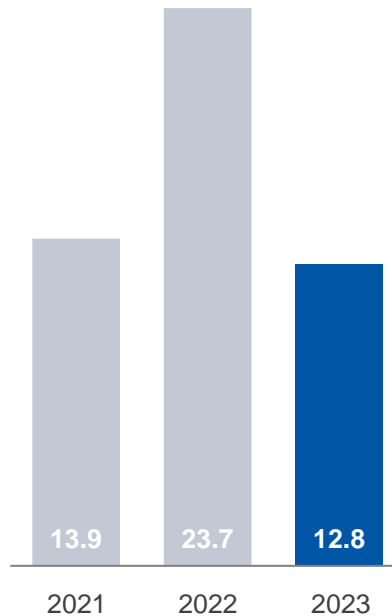
Cash generated from operations

€ million



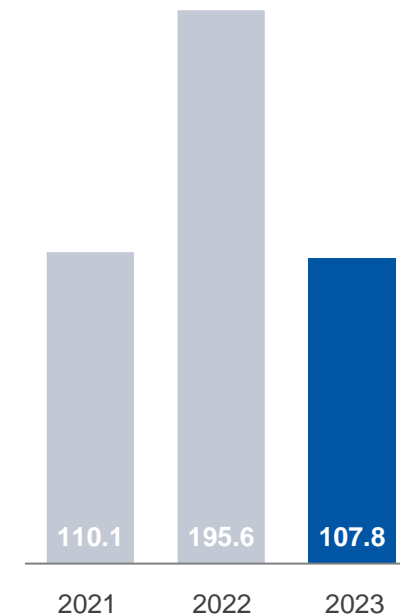
ROCE

%



Basic underlying EPS

€ cents



Ordinary DPS

€ cents



Investing through cycle for value accretive growth

Expected to deliver through cycle mid-teen-returns when fully operational

CORRUGATED PACKAGING

FLEXIBLE PACKAGING

Pulp and paper mills

Pulp and paper mills

€0.4 bn

€0.4 bn

€1.2 bn

€0.2 bn

€0.2 bn

Converting network

Converting network

80% of investment is expected to be completed by end of 2024 with meaningful EBITDA contribution from 2025

Good progress delivering MAP2030 sustainability commitments

CIRCULAR DRIVEN SOLUTIONS

85%

of our packaging and paper revenue is from products that are reusable, recyclable or compostable



CREATED BY EMPOWERED PEOPLE

0.64

Total Recordable Case Rate, safety performance among industry leaders



TAKING ACTION ON CLIMATE

22%

reduction of our absolute Scope 1 and 2 GHG emissions against our 2019 baseline



Well positioned to drive value accretive growth, sustainably

Structural market growth

Sustainable packaging



eCommerce

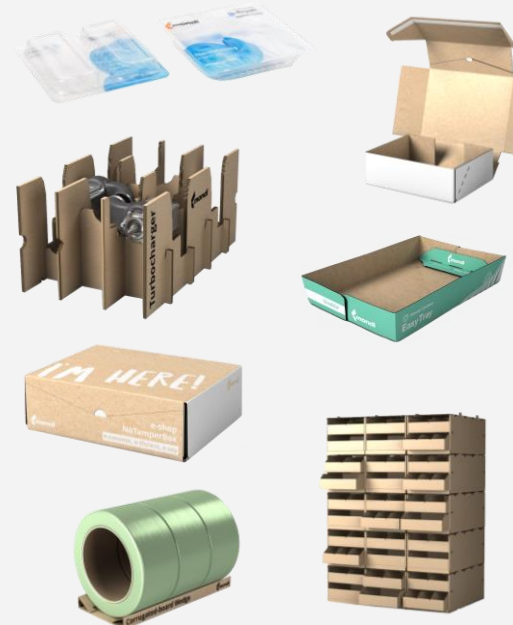


Market leader

- #1** • Virgin containerboard (Europe)
- Containerboard (emerging Europe)
- Corrugated solutions (emerging Europe)
- Kraft paper (global)
- Paper bag producer (Europe) and a global leader
- #3** • Consumer flexible packaging (Europe)

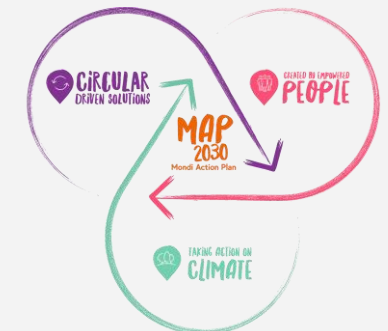
Unique portfolio of innovative solutions

RANGE OF MULTI-MATERIAL SOLUTIONS



Sustainable by design

- Sustainability firmly embedded across the organisation
- MAP2030 sustainability framework driving continued progress



Built on Responsible Business Practices



THANK YOU!