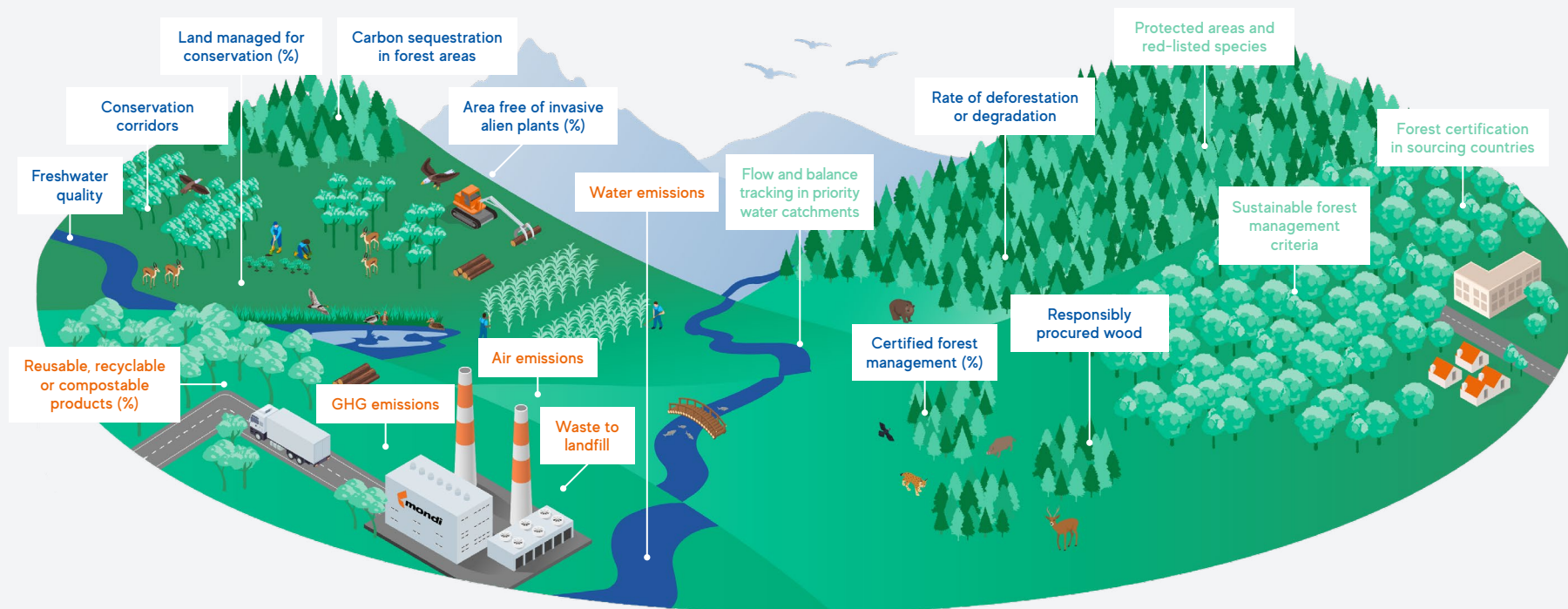


Key principles of our landscape approach

The infographic below illustrates our operational environment and some key nature-related performance indicators (KPIs) we regularly assess and monitor in our operational landscapes.



Our sourcing areas ►

We source wood responsibly from our own and external sourcing areas. In our forest plantations in South Africa, for example, we can directly manage environmental impact drivers. We implement and test the best available management practices and monitoring approaches.

In external sourcing areas, such as semi-natural forests in Europe, we do not have direct control of land management. We monitor the overall state of ecosystems via proxy key performance indicators and collaborate to increase science-based knowledge of ecosystem stewardship and promote best practice sharing.

Our manufacturing operations ►

In our manufacturing operations, we can directly manage environmental impact drivers. We conduct biodiversity and water stewardship assessments and develop action plans.

Our primary focus remains on our pulp and paper mills as no material impacts or dependencies have been identified for our converting sites.

Broader environment

Taking a landscape-level approach, we also look at nature-related impacts and dependencies beyond our direct operations and sourcing areas. Where we are not able to directly influence ecosystem stewardship on the ground, we focus our efforts on catalysing positive change at scale via collaboration with relevant local and regional partners.